

\$819,800 - 78 Panton Way Nw, Calgary

MLS® #A2207146

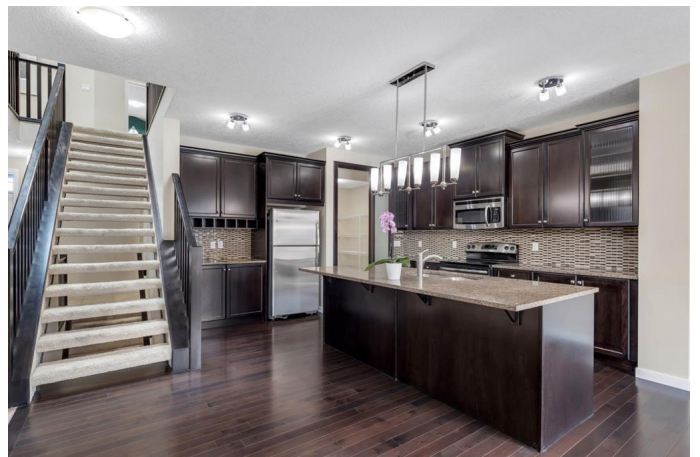
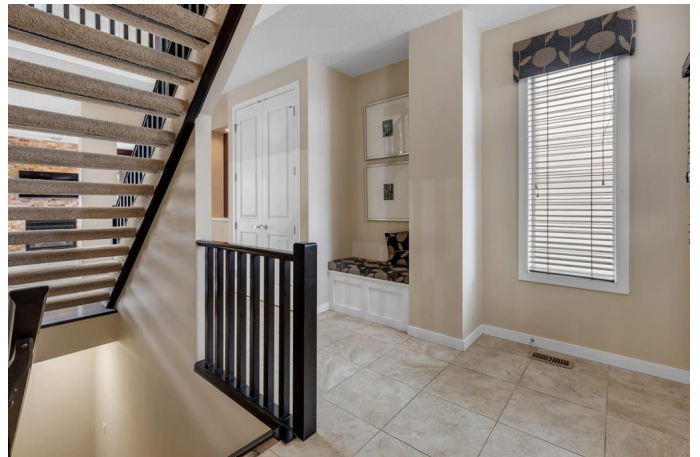
\$819,800

3 Bedroom, 4.00 Bathroom, 2,101 sqft

Residential on 0.08 Acres

Panorama Hills, Calgary, Alberta

Former show homes' first time on market, with all the extras/upgrades, in a highly desirable NW Calgary community. Now presenting, the 'ABERDEEN' residence, in 'Panorama Hills' - Next to amenities, green spaces, schools, highways & so much more. Updates/features include: New siding, new roof, some new windows, new eastroughs, new soffits, new gutters & more. Step inside to elegance, with open-riser stair case, built-in features, and additional added windows greeting you. The main floor plan connects the kitchen, dining and family room seamlessly, creating a one of a kind space for entertainment and gathering. Family room features plethora of windows, a very cozy floor-to-ceiling tile fireplace, and built-in ceiling speakers. Gleaming hardwood floors lead you through the kitchen, which features: Wine rack, glass cabinet, rich cabinets, SS appliances, granite counters, large island with eating bar & walk-thru pantry to mud room. Main floor is completed with storage space, and half bath. Head upstairs to land in a one-of-a-kind bonus room/den, that has soaring valued ceilings, along with skylight, tons of pot lights creating an upscale look. The office/den has its own built in space with desk, and under cabinet lighting. Primary bedroom continues the elegance, with further vaulted high ceilings, large windows, walk in closet and spa-like ensuite retreat that features: Double vanity, tub, walk in shower and toilet room. Upper level completed with 2 additional bedrooms and another full bath.



Basement is fully finished, and set up as its own separate retreat with a Kitchenette (wet bar, cabinets, counter space, space for table), a large entertainment space that has its own cozy fireplace, and separate room. Main and lower levels both have 9ft ceiling, along with the top floor having soaring vaulted ceiling making this truly a stand out home. This home has A/C - perfect for the warmer days, along with a double front garage for the cooler days ensuring all your needs are met during all seasons. There is deck in rear, along with alley access. Walk to your favourite grocery store, green spaces, transit, and get around like a breeze with highway access. Homes like this don't come up often and is a unique opportunity to own a statement residence in a sought after NW Calgary Community. The 'ABERDEEN' is ready to welcome its new owners.

Built in 2011

Essential Information

MLS® #	A2207146
Price	\$819,800
Bedrooms	3
Bathrooms	4.00
Full Baths	3
Half Baths	1
Square Footage	2,101
Acres	0.08
Year Built	2011
Type	Residential
Sub-Type	Detached
Style	2 Storey
Status	Active

Community Information

Address	78 Panton Way Nw
Subdivision	Panorama Hills

City	Calgary
County	Calgary
Province	Alberta
Postal Code	t3k0w1

Amenities

Amenities	None
Parking Spaces	4
Parking	Double Garage Attached
# of Garages	2

Interior

Interior Features	Closet Organizers, Double Vanity, Granite Counters, High Ceilings, Kitchen Island, Pantry
Appliances	Dishwasher, Dryer, Electric Stove, Garage Control(s), Microwave Hood Fan, Refrigerator, Washer, Window Coverings
Heating	Forced Air
Cooling	Central Air
Fireplace	Yes
# of Fireplaces	1
Fireplaces	Gas
Has Basement	Yes
Basement	Finished, Full

Exterior

Exterior Features	None
Lot Description	Back Lane, Back Yard
Roof	Asphalt Shingle
Construction	Wood Frame
Foundation	Poured Concrete

Additional Information

Date Listed	April 1st, 2025
Days on Market	17
Zoning	R-G
HOA Fees	263
HOA Fees Freq.	ANN

Listing Details

Listing Office

RE/MAX Real Estate (Mountain View)

Data is supplied by Pillar 9â„¢ MLSÂ® System. Pillar 9â„¢ is the owner of the copyright in its MLSÂ® System. Data is deemed reliable but is not guaranteed accurate by Pillar 9â„¢. The trademarks MLSÂ®, Multiple Listing ServiceÂ® and the associated logos are owned by The Canadian Real Estate Association (CREA) and identify the quality of services provided by real estate professionals who are members of CREA. Used under license.